



WIRED for Health Board Meeting

December 17, 2010



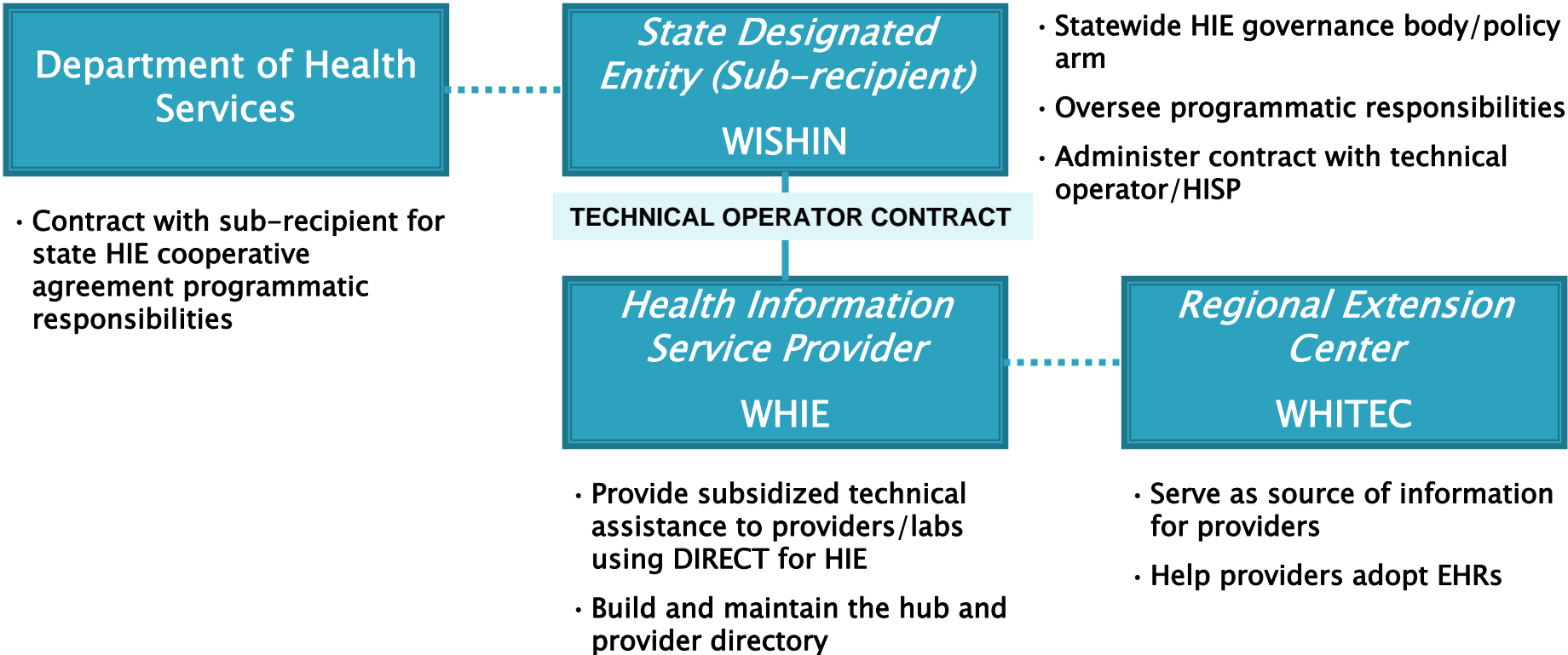
Agenda

- ▶ **ONC Update**
- ▶ **Roles and Responsibilities**
- ▶ **Strategy for Meeting Stage 1 Meaningful Use Requirements**
- ▶ **Near-Term Approach**
- ▶ **Phased Deployment**
- ▶ **Next Steps**

ONC Update

- ▶ Discussed approach with ONC on Wednesday, December 8
- ▶ Received ONC Technical Assistance
- ▶ Met with ONC leadership to discuss Near Term Plan Amendment
- ▶ Submitted draft amendment to ONC for initial review on December 16
- ▶ Targeting Board and ONC approval today; final ONC Notice of Grant Award by December 23

Roles and Responsibilities



Strategy for Meeting Stage 1 Meaningful Use Requirements

Pharmacies

Amendment

- Gap: > 10% statewide; non-internal pharmacy subset
- Goal: Reduce subset by 50% by end of 2011
- No significant change

Implementation Strategy

- Target pharmacies that are not internal
- Conduct outreach and match providers with e-prescribing pharmacies
- Ongoing monitoring and tracking of progress toward goal

Laboratories

Amendment

- Gap: ≈34% statewide
- Goal: Reduce white space by 50% by end of 2011
- Updated geo-coded map by county with reference labs

Implementation Strategy

- Refine targeted reference labs in Q1 2011
- Survey reference labs regarding structured lab results (LOINC)
- Determine lab volumes and determine denominator
- Conduct outreach, starting with CAHs with reference labs
- Provide option to exchange using Direct through WHIE (HISP) or independently
- Ongoing monitoring and tracking of progress toward goal

Clinical Summaries

Amendment

- Gap: ≈29% of physicians w/o access to an HIE network
- Goal: Provide all providers with access to at least one option for HIE by the end of 2011
- Captured physician numbers with HIE coverage for each major network: CHIC, Epic Care Everywhere, KCIN, Ministry/Marshfield, and WHIE

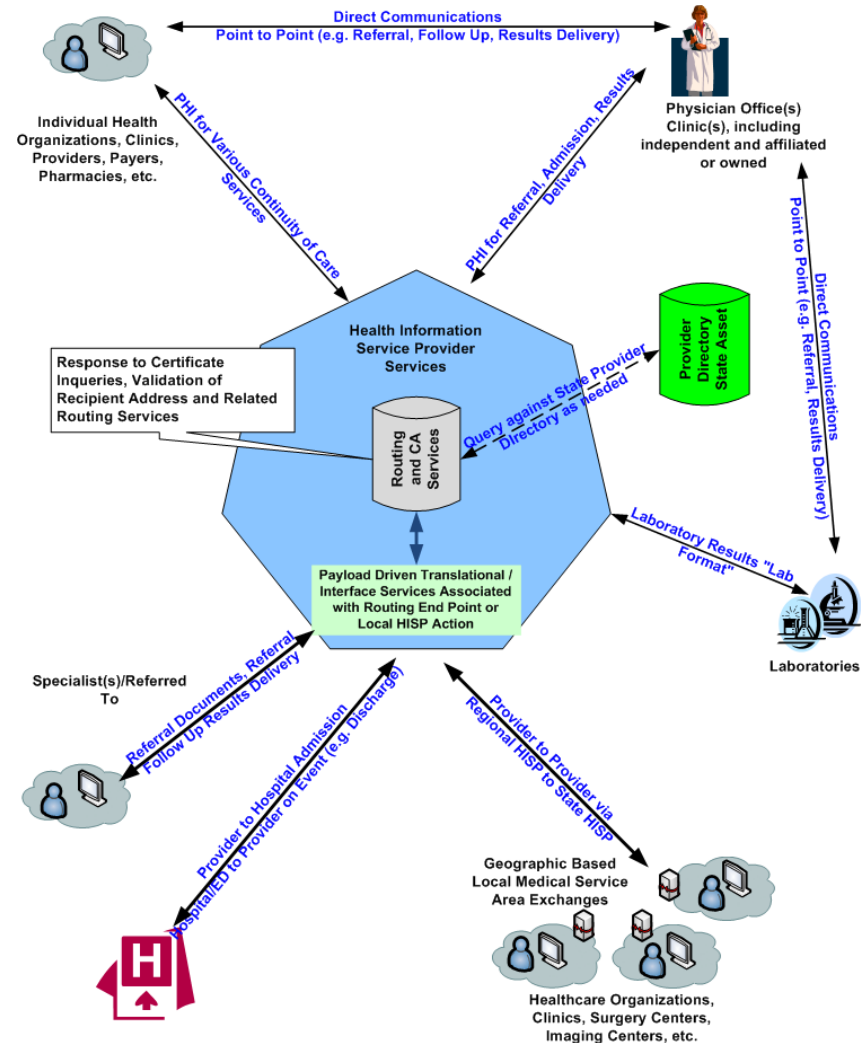
Implementation Strategy

- Determine providers in each network and refine white space for HIE and EHR adoption
- Conduct outreach, starting with rural areas
- Provide option to exchange using Direct through HISP or independently
- Ongoing monitoring and tracking of progress toward goal

Near-Term Approach

Overview and Highlights

- ▶ “Hub and spoke” architecture that supports provider and lab exchange (push) of secure messages using Direct
- ▶ Hub will include a certificate authority (Phase 1a), state-level provider directory (Phase 1b), and interface engine (Phase 1b)
- ▶ Providers, labs, and other exchanges can leverage WHIE, as the state-level HISP, for exchange of Direct messages or connect between themselves
- ▶ Providers and labs connecting through WHIE, will receive subsidized support in using Direct



Phased Deployment

Phase 0

- ▶ Timeframe: Jan 2011
- ▶ Identify staff for WHIE
- ▶ Initiate and finalize contract discussions for Phases 1a and 1b

Phase 1

- ▶ Timeframe: Q1-Q2 2011
- ▶ Phase 1a:
 - WHITEC will launch single source for HIE information
 - WHIE will provide subsidized technical assistance to providers and labs using Direct
 - Launch Direct point-to-point messaging educational sessions
- ▶ Phase 1b:
 - WHIE to establish Direct gateway with directory services; serve as trust broker
 - WHIE to establish help desk and tracking

Phase 2

- ▶ Timeframe: 2011 >
- ▶ Infrastructure:
 - Conduct HIE vendor fair
 - Procure comprehensive HIE solution
 - Begin implementing Wisconsin SHIN
- ▶ Operations:
 - Conduct ongoing monitoring and tracking of progress toward goals



Next Steps

- ▶ Receive final ONC approval
- ▶ Receive Notice of Grant Award
- ▶ Finalize contract with WISHIN
- ▶ Update Strategic and Operational Plan